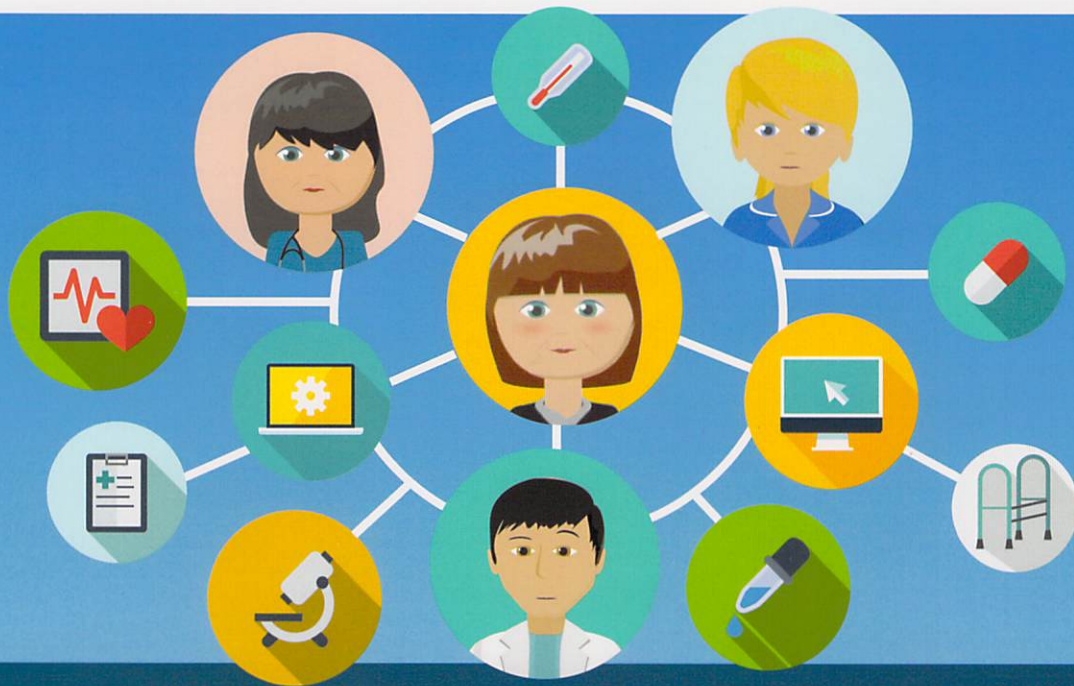




Lincolnshire Health and Care

Shaping services to meet your needs into the future



Lincolnshire's Care Portal

Changing the way we use your health and care information to improve your care

In Lincolnshire, we are improving the way information about you is shared between health and care professionals in order to deliver better care.

The new system is called the Care Portal.

It will provide a view of selected information about you that is contained in existing electronic record systems across the county. This will include:

- lab tests
- x-rays
- appointments
- discharge letters
- medication
- allergies
- care plans that you might have put together with your GP, carer or social worker

The Care Portal will deliver more joined up, coordinated care delivered by staff working more effectively together, with more time saved to focus on patients.

Find out more at www.lincolnshirehealthandcare.org/care-portal
or call **01522 421888**